

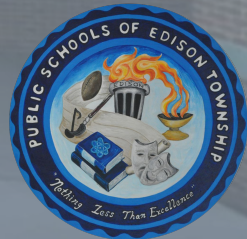
INFRASTRUCTURE IMPROVEMENTS START OF PHASE ONE

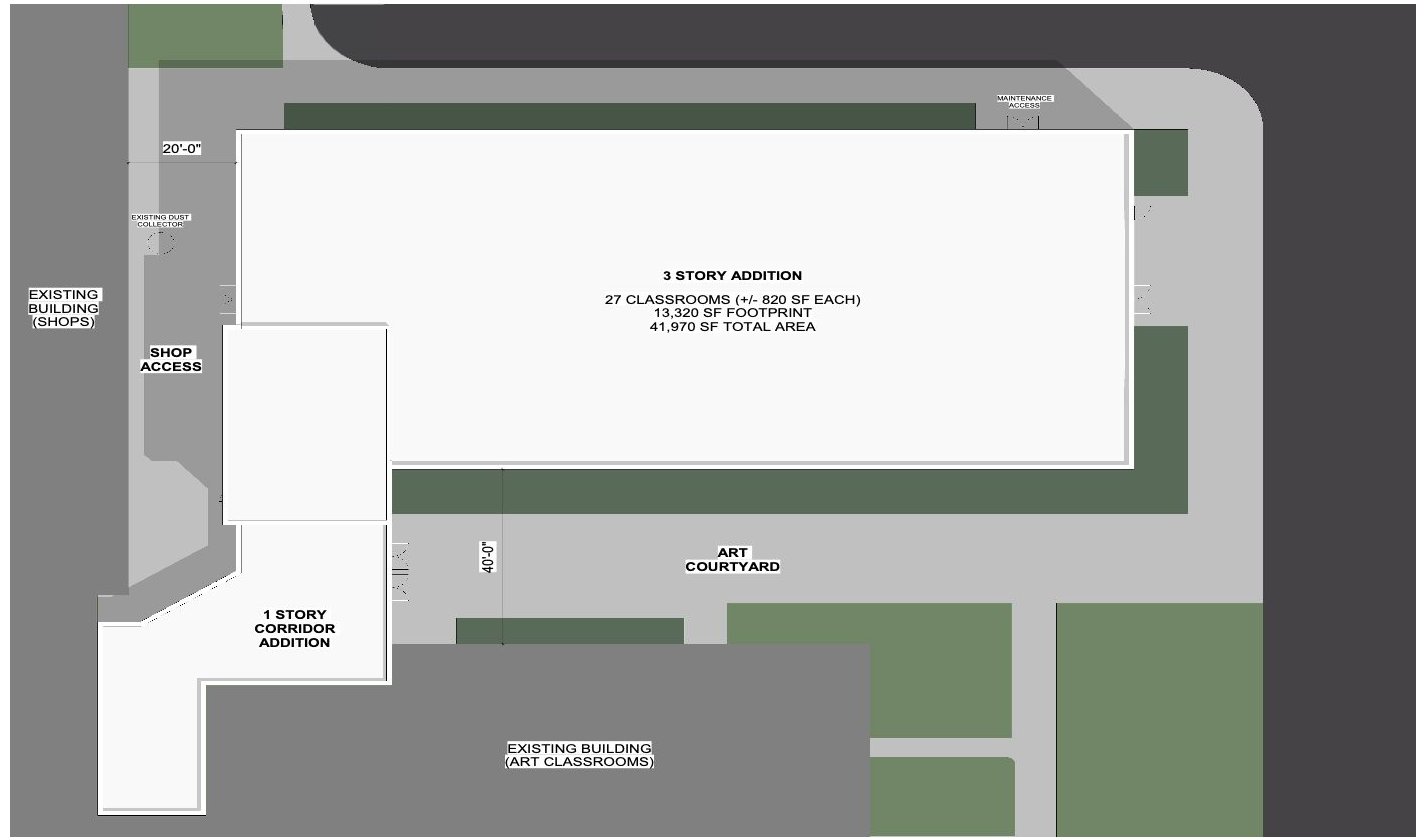
Committee of the Whole Meeting • May 23, 2022

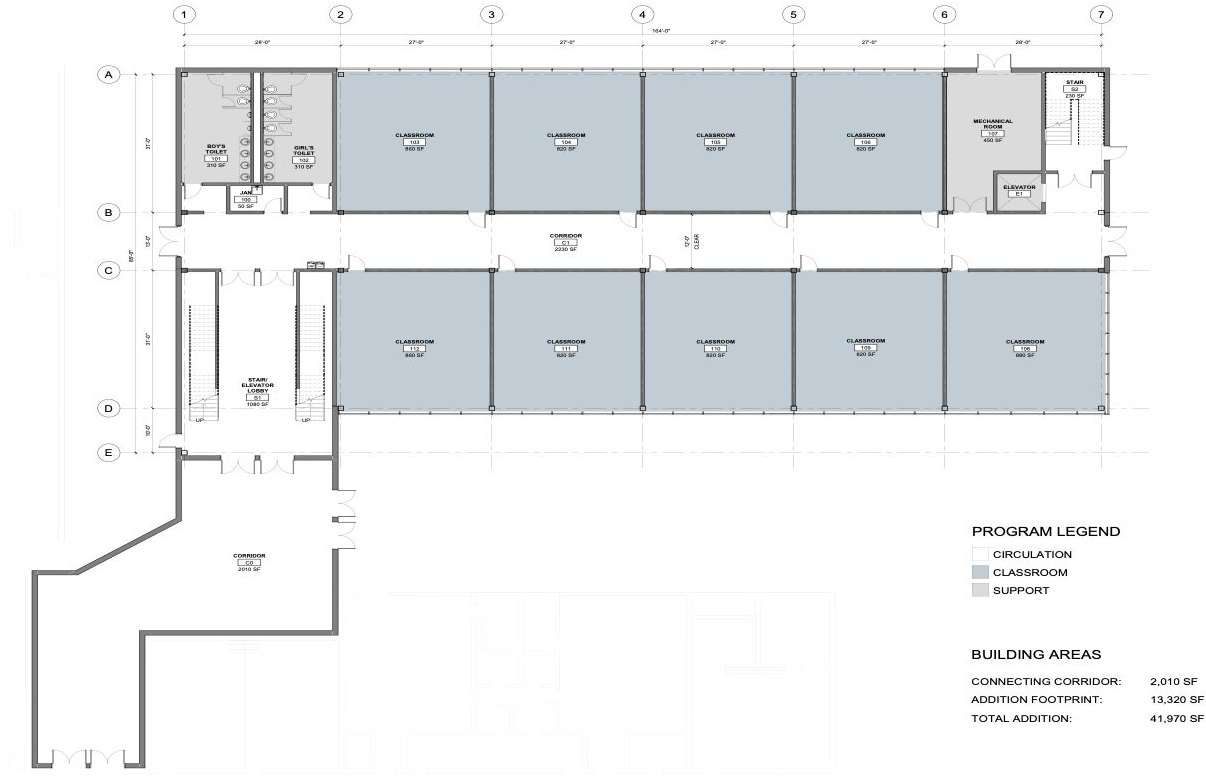


USA ARCHITECTS' PROPOSALS

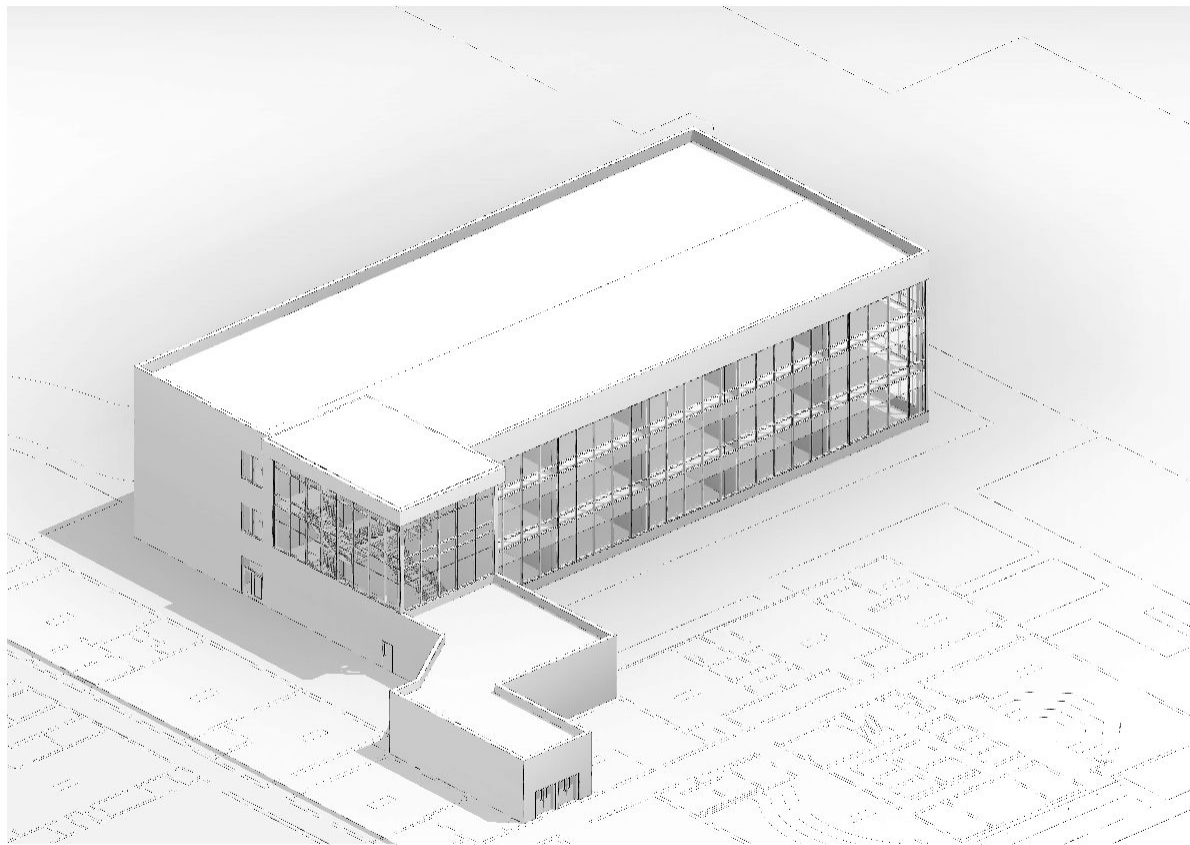
JOHN P. STEVENS HIGH SCHOOL











PROPOSED ADDITION AT JOHN P. STEVENS HIGH SCHOOL
EDISON TOWNSHIP PUBLIC SCHOOLS

04.22.22

EXTERIOR PERSPECTIVE

JOHN P. STEVENS HIGH SCHOOL

CLASSROOM ADDITION COSTS

Twenty-seven (27) classrooms

41,970 Square Feet

Total Costs:

Low \$22,000,000

High \$24,500,000



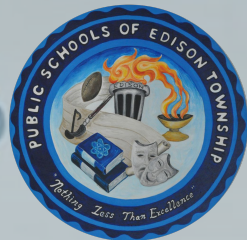
2

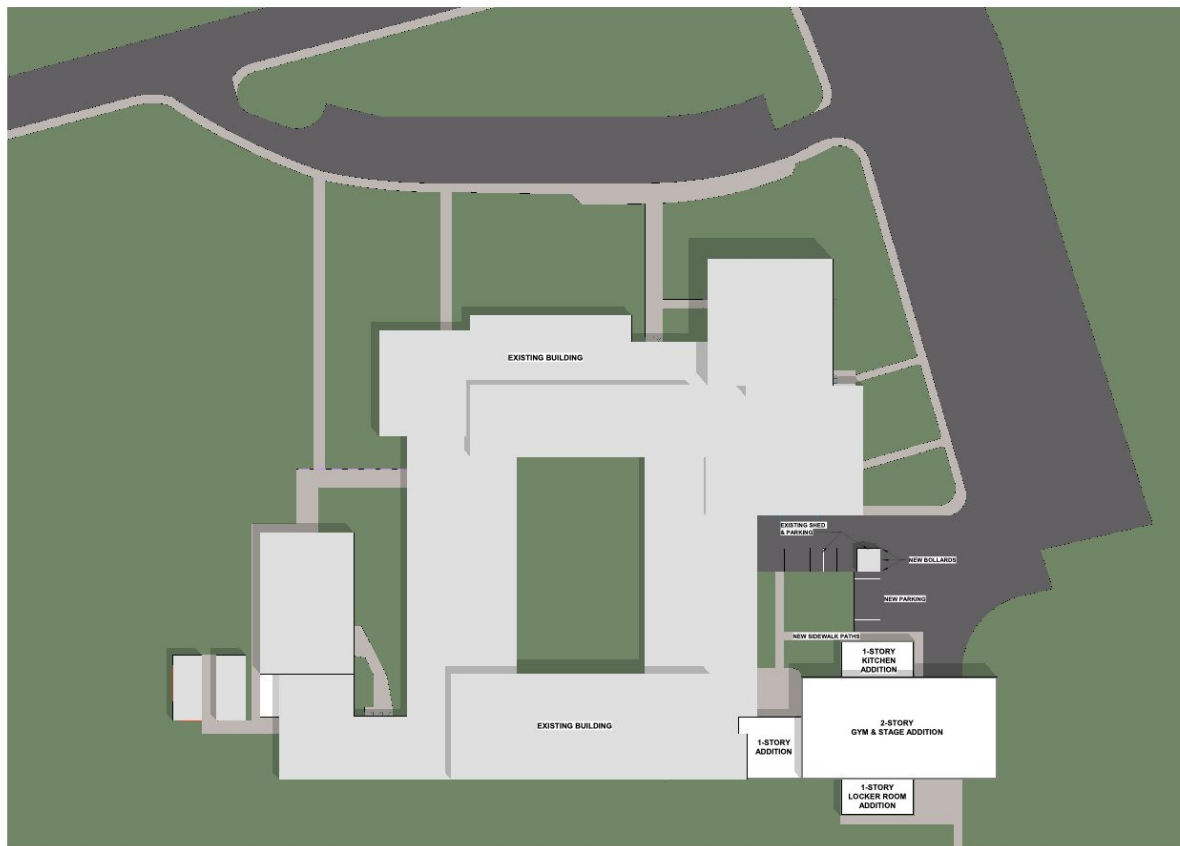
3

4

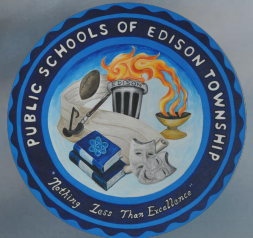
5

JOHN ADAMS MIDDLE SCHOOL AUXILIARY GYM





OPTION #1



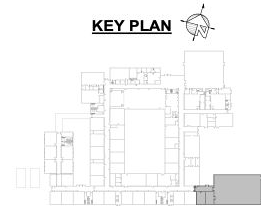


Department Legend

- CIRCULATION
- GYMNASIUM + ACCESSORY SPACE
- STORAGE

TOTAL ADDITION = 8,970 SF

KEY PLAN



JOHN ADAMS MIDDLE SCHOOL - GYM ADDITION

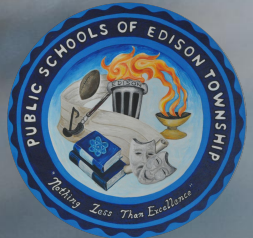
JOHN ADAMS MIDDLE SCHOOL

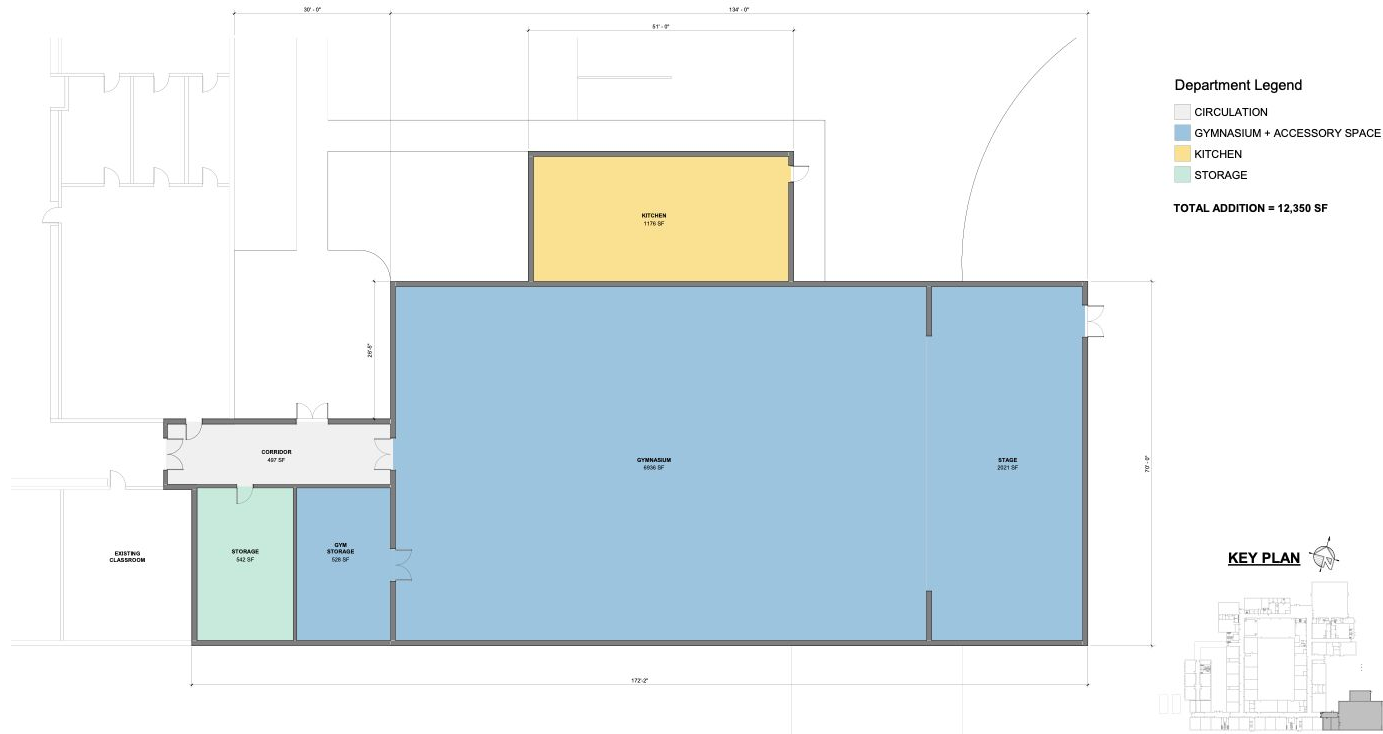
05.12.2022

FIRST FLOOR PRESENTATION PLAN - OPTION 1

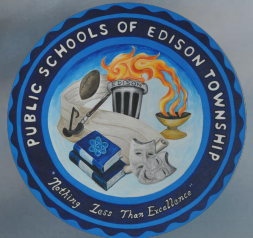
SCALE: 1/8" = 1'-0"

OPTION #2





OPTION #3





JOHN ADAMS MIDDLE SCHOOL AUXILIARY GYM

OPTION COSTS

Option #1

Gym Only



\$3.5 Million

Option #2

Gym and
Warming Kitchen



\$4.6 Million

Option #3

Gym, Warming
Kitchen, Stage, and
Locker Rooms



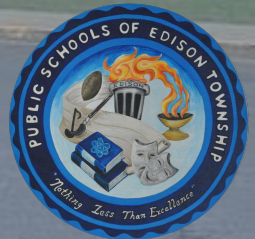
\$6.6 Million

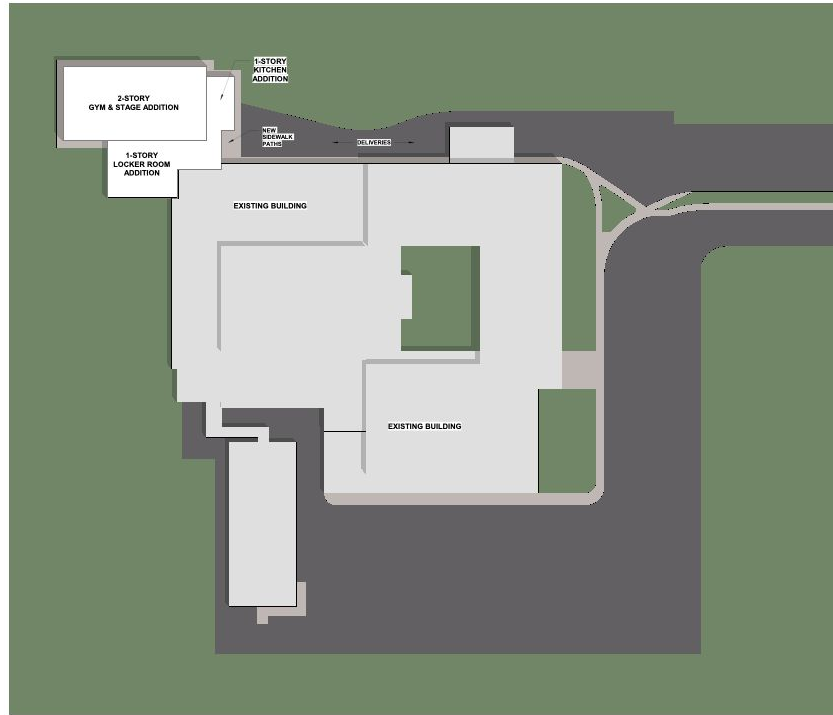


WOODROW WILSON MIDDLE SCHOOL AUXILIARY GYM

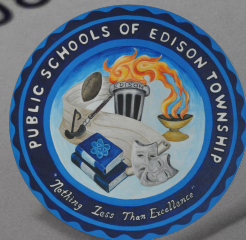
Teacher Appreciation
Week

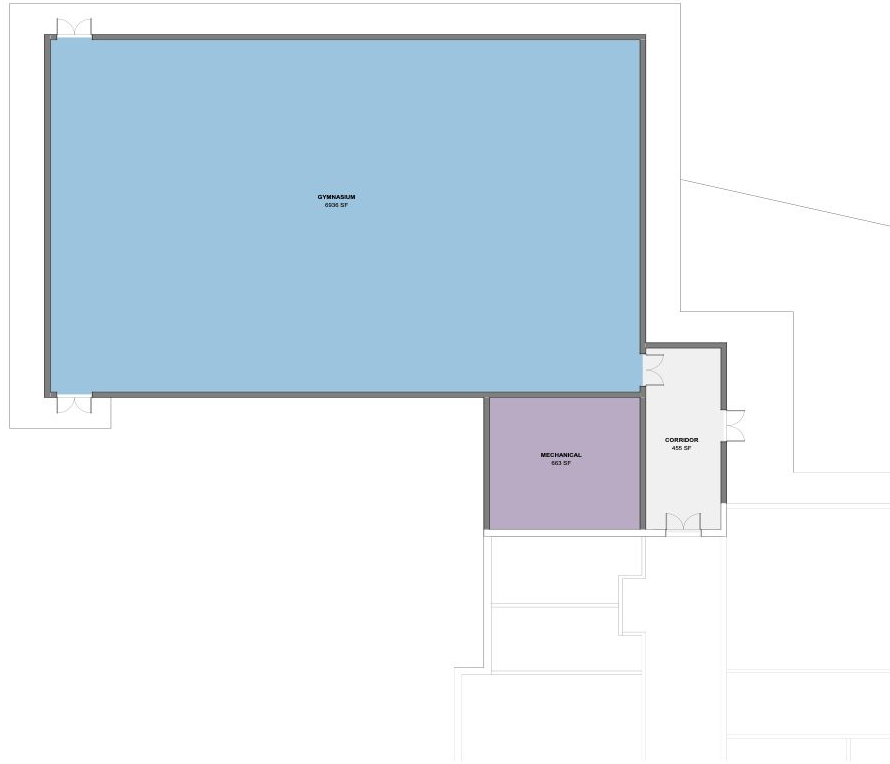
Donated by the
2015-2016 PTA





OPTION #1

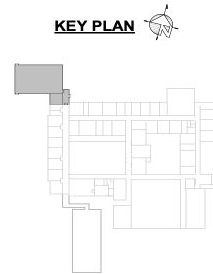




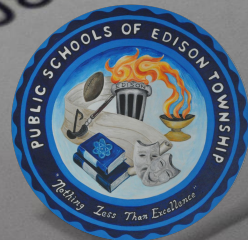
Department Legend

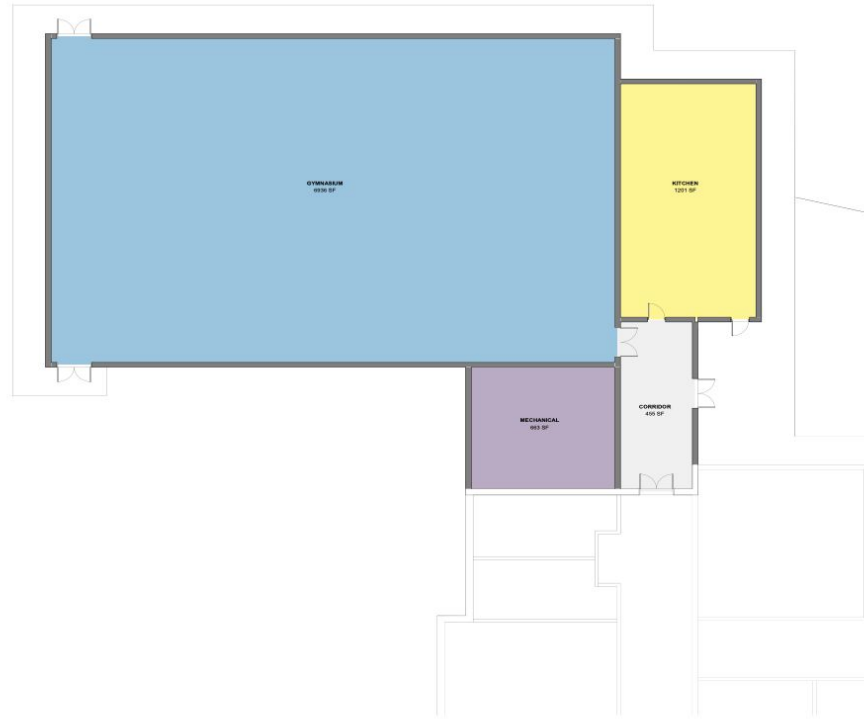
- CIRCULATION
- GYMNASIUM + ACCESSORY SPACE
- SUPPORT

TOTAL ADDITION = 8,560 SF



OPTION #2





Department Legend

- CIRCULATION
- GYMNASIUM + ACCESSORY SPACE
- KITCHEN
- SUPPORT

TOTAL ADDITION = 9,860 SF

KEY PLAN

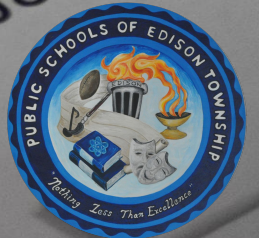


WOODROW WILSON MIDDLE SCHOOL - GYM ADDITION
WOODROW WILSON MIDDLE SCHOOL
05.20.22

FIRST FLOOR PRESENTATION PLAN - OPTION 2

SCALE: As Indicated

OPTION #3



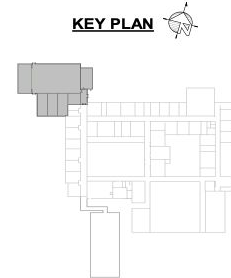


Department Legend

- CIRCULATION
- GYMNASIUM + ACCESSORY SPACE
- KITCHEN
- STORAGE
- SUPPORT

TOTAL ADDITION = 15,400 SF

KEY PLAN



WOODROW WILSON MIDDLE SCHOOL - GYM ADDITION
WOODROW WILSON MIDDLE SCHOOL

FIRST FLOOR PRESENTATION PLAN - OPTION 3

SCALE: As indicated

WOODROW WILSON MIDDLE SCHOOL AUXILIARY GYM

OPTION COSTS

Option #1

Gym Only



\$3.5 Million

Option #2

Gym and
Warming Kitchen



\$4.6 Million

Option #3

Gym, Warming
Kitchen, Stage, and
Locker Rooms



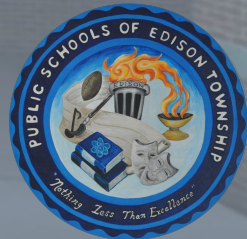
\$7.4 Million

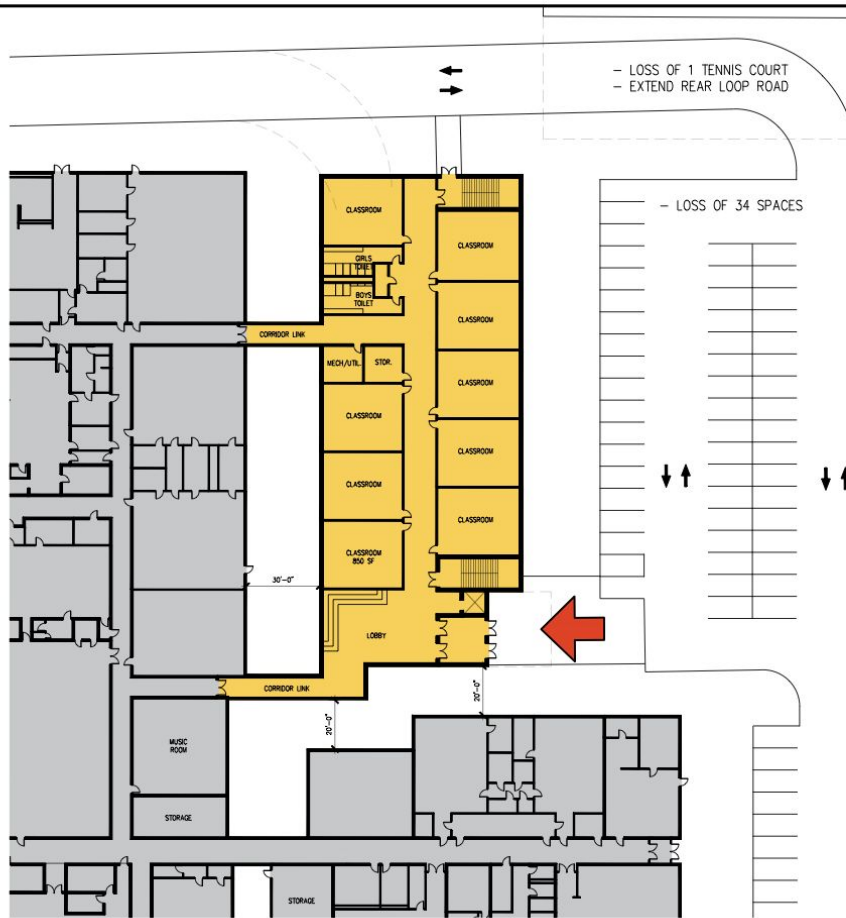




DMR ARCHITECTS' PROPOSALS

JOHN P. STEVENS HIGH SCHOOL

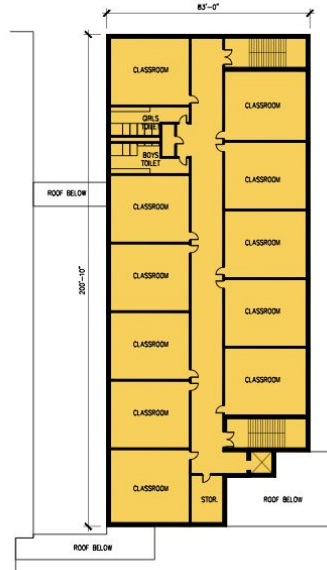




NEW CLASSROOM WING
J.P. STEVENS HIGH SCHOOL

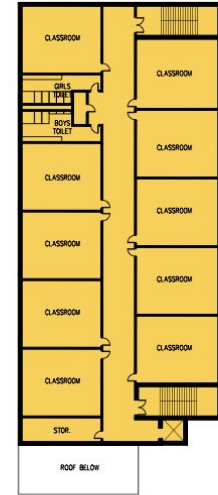
PROJECT DATA

FIRST FLOOR ADDITION:	17,210 G.S.F.
SECOND FLOOR ADDITION:	15,840 G.S.F.
THIRD FLOOR ADDITION:	14,860 G.S.F.
TOTAL :	47,910 G.S.F.



CLASSROOMS

FIRST FLOOR:	9 CLASSROOMS
SECOND FLOOR:	11 CLASSROOMS
THIRD FLOOR:	10 CLASSROOMS
TOTAL :	30 CLASSROOMS



DATE: 5-12-22
REV:
SCALE: 1"=40'-0"
SHEET #
A3
PROJECT # 4547



JOHN P. STEVENS HIGH SCHOOL

CLASSROOM ADDITION COSTS

Thirty (30) classrooms

48,000 Square Feet

Total Costs:

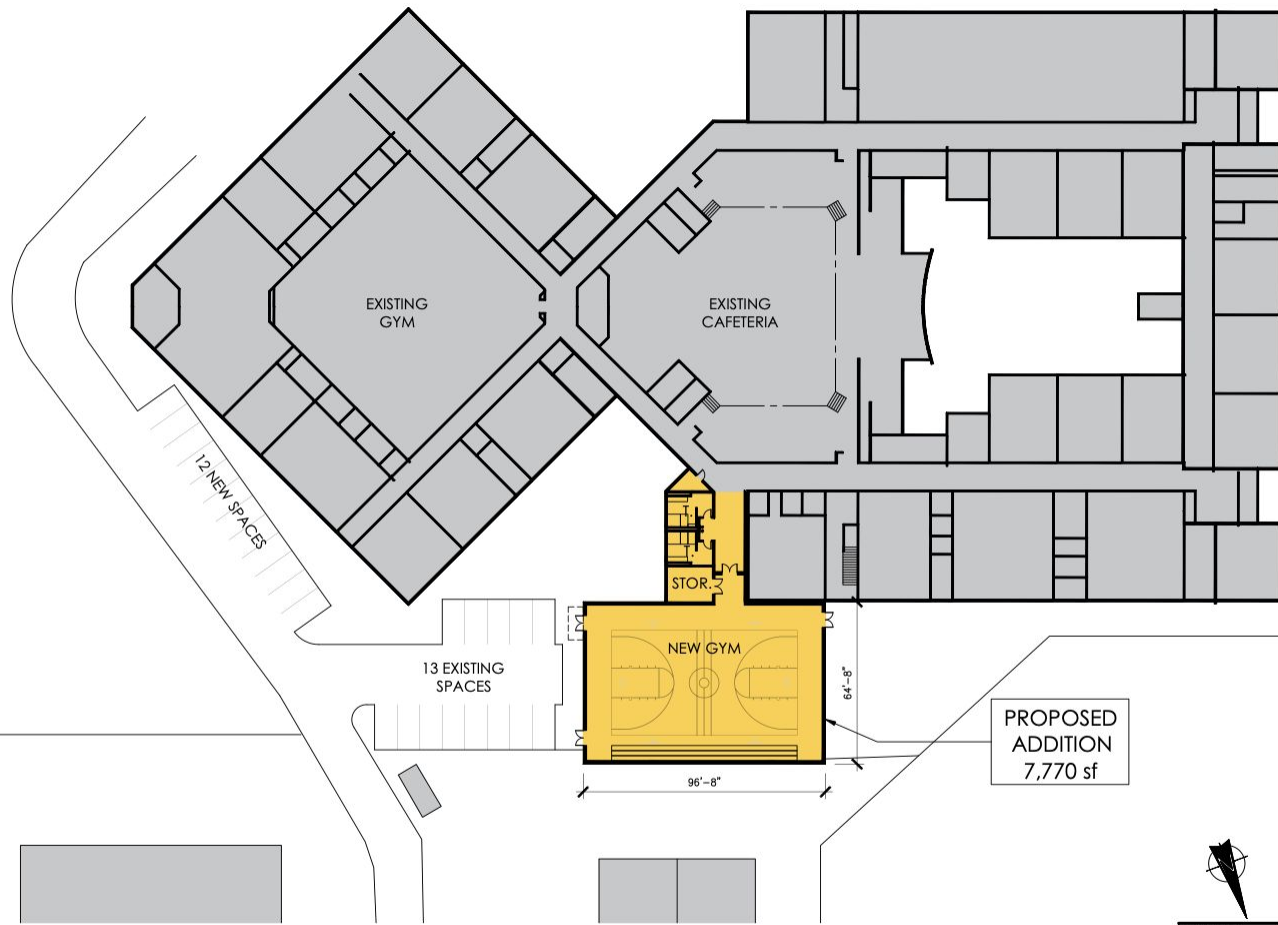
Low \$24,300,000

High \$25,700,000



HERBERT HOOVER MIDDLE SCHOOL AUXILIARY GYM





1 FIRST FLOOR PLAN
SCALE: 1"=40'-0"

NEW GYMNASIUM
HERBERT HOOVER MIDDLE SCHOOL

DATE: 5-12-22

REV:

SCALE: 1"=40'-0"

SHEET #

A1

PROJECT # 5088

DMR

ARCHITECT
PLANNING AND
ENGINEERING
FIRM, INC.

777 HARRISON DRIVE, 4TH FL.
FARMINGTON, CONNECTICUT 06030
TEL: 860.634.6400
F: 860.298.2462

HERBERT HOOVER MIDDLE SCHOOL AUXILIARY GYM COSTS

7,700 Square Feet

For Gym Area

Total Costs:

Low \$4.0 Million

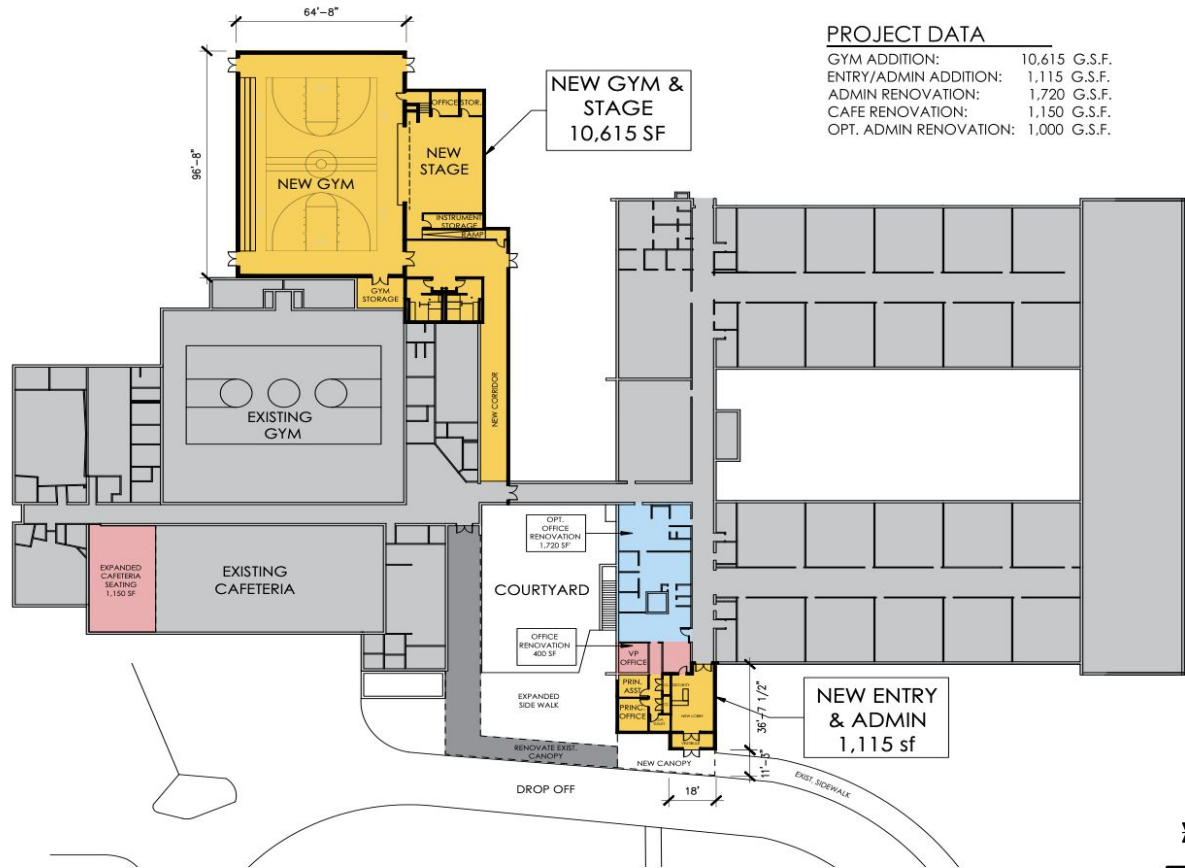
High \$4.35 Million





THOMAS JEFFERSON MIDDLE SCHOOL ADDITIONS





1 FIRST FLOOR PLAN
SCALE: 1"=40'-0"

NEW GYMNASIUM, LOBBY, & RENOVATION
THOMAS JEFFERSON MIDDLE SCHOOL



DATE: 5-12-22
REV:
SCALE: 1"=40'-0"
SHEET #
A2
PROJECT # 5089

DMR
ARCHITECTURE
P.C. ARCHITECTS
ENGINEERS & PLANNERS
LLC

222 Commerce Street, 6th Fl.
Baltimore, MD 21202
Phone: 410.528.0000
Fax: 410.528.0000
T: 410.528.0000

THOMAS JEFFERSON MIDDLE SCHOOL ADDITIONS

COSTS

Gym/Auditorium Addition	10,615 Square Feet
New Entrance and Security Vestibule	1,115 Square Feet
Renovation of Existing Cafeteria	1,150 Square Feet
Renovation of Existing Admin. Office	1,720 Square Feet
Total Square Footage	14,600 Square Feet

Total Costs:
Low \$7.1 Million
High \$7.75 Million



DECISIONS

John P. Stevens Addition

Which Architect Firm?

WWMS/John Adams-Auxiliary Gyms

Which Option?

HHMS Auxiliary Gym

Yes/No?

TJMS Auxiliary Gym/Renovations

Yes/No?



PROJECTED PROJECT COSTS

John P. Stevens:

Budgeted Amount

USA: \$24.5 Million (27 classrooms) (\$17 M)

DMR: \$25.7 Million (30 classrooms) (\$17 M)

JAMS and WWMS Lowest Cost Option:

\$3.5 Million (\$7 M)

HHMS only presented Option:

\$4.35 Million (3.5 M)

TJMS only presented Option:

\$7.75 Million (5.5 M)

Total Costs for Projects:

\$40.1 or \$41.3 Million (\$33 M)





QUESTIONS?

