

Preparing For A Bright Future: The importance of a successful transition from School to Adult Life for individuals with different abilities through a firsthand experience for parents.

1

**BY: ROBERT T. JACKSON  
ASSISTANT COORDINATOR  
EMPLOYMENT FIRST & TRANSITION TO 21  
UNIT**



## The purpose of this presentation:

- Encourage people with different abilities.
- Provide information for parents who support people with different abilities.
- Provide helpful resources towards transition into adult life.



# BACKGROUND



- Diagnosed with several different disabilities.
- Participated in several IEP Meetings.
- Attended self-contained special education classes.
- Received SSI, SSDI, Medicaid, & Medicare.
- Grew up in a single parent household.
- Experience a period of homelessness as a child.
- Received services from DVRS, DDD.
- Completed 2 semesters College.

# HOW I FELT AT THE TIME

- Low self-esteem
- No career goals
- Unprepared for college and employment
- Bullied in school and at home
- Experienced extreme depression

# SUPPORTING YOUR CHILD



**MEAN TEACHER  
BULLIES  
STRUGGLING  
ADHD STUDENT**

Goalcast  
**EPICS**



## KEYS TO YOUR CHILD'S SUCCESS

- Support from others.
- Encouragement is key to a child's future.
- Understanding their way of learning.
- Be supportive of the child's goals for the future.

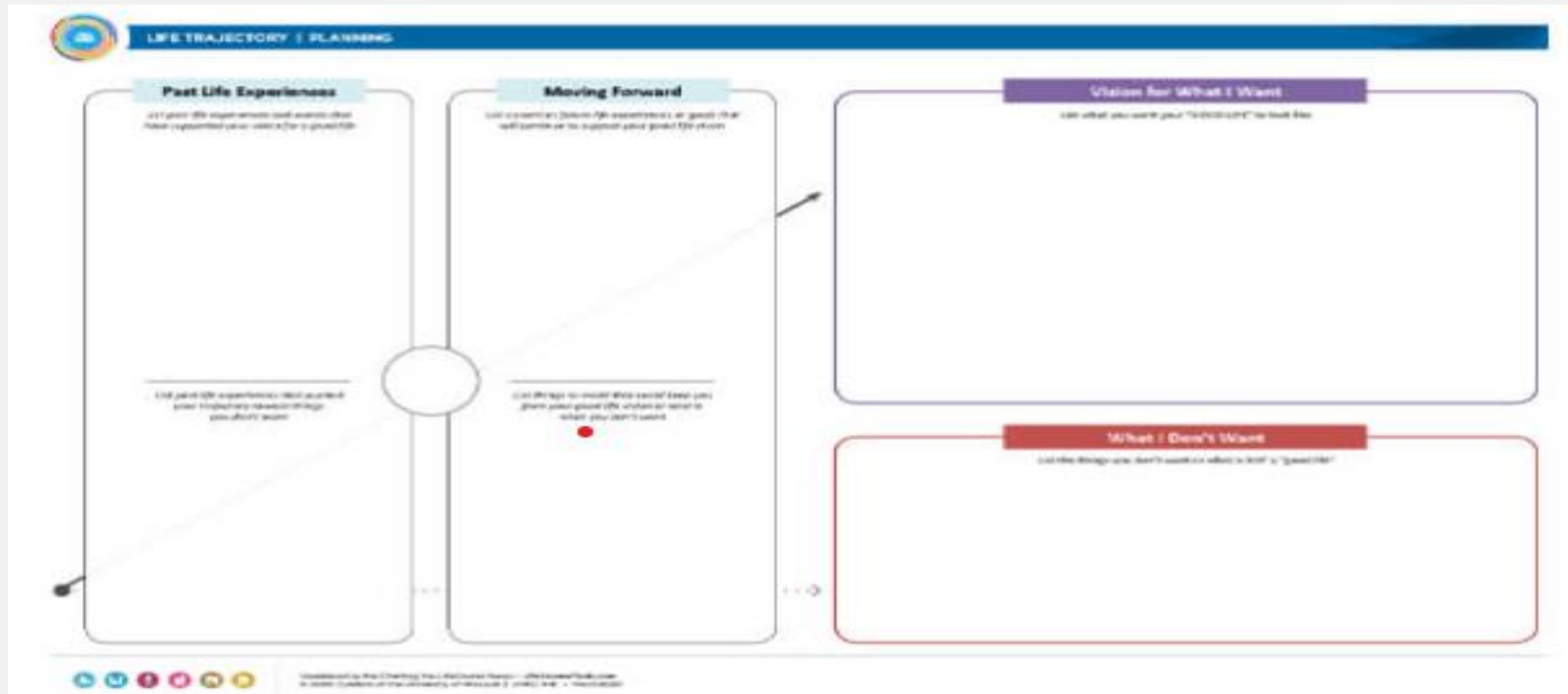
## TIPS FOR STAYING POSITIVE

- LEARNING FROM YOUR CHILD CAN MAKE YOU A **BETTER PERSON**
- **FOCUS** ON WHAT YOUR CHILD IS GOOD AT
- THERE'S NO SUCH STATEMENT AS THEY CAN'T
- **ALL CHILDREN HAVE A PURPOSE** IN LIFE
- CHILDREN WHO STRUGGLE **WILL ALSO SUCCEED**

# SUGGESTED ACTIVITY

- List 5 skills that make your child unique.
- Write them down.
- Hang the list where child can see it.





Web Address: <http://www.lifecoursetools.com/lifecourse-library/foundational-tools/person-centered/>

# LEARNING STYLES

- **Visual** – Watching videos, charts, diagrams to do certain tasks.
- **Kinesthetic** - Doing certain tasks with a hands on approach.
- **Auditory** –listening to what is being said.
- **Traditional/Reading** –by reading text, classroom setting, lectures.

# LEARNING STYLE ASSESSMENT RESOURCES



- **VARK (Visual, Audio, Reading, Kinesthetic)**  
Website: [www.vark-learn.com](http://www.vark-learn.com)
- **Educational Planner** [www.educationplanner.org/students/self-assessments/learning-styles-quiz.shtml](http://www.educationplanner.org/students/self-assessments/learning-styles-quiz.shtml)
- **New Jersey Career Assistance Navigator**  
Website: <https://njcis.intocareers.org/default.aspx>
- **16 Personalities**  
Website: <https://www.16personalities.com/>

# POST SECONDARY EDUCATION

- **Vocational -Technical School**
- **Two-year community college**
- **Four-year public or private university**
- **Adult Learning Centers**



## COLLEGE PROGRAMS FOR STUDENTS WITH I/DD

- Bergen County Community College, Turning Point (**Bergen**) 201-493-4087
- Brookdale Community College, Keep Achieving (**Monmouth**) 732- 493-1919 ext. 773
- Camden County Community College, Garden State Pathways (**Camden**) 856-227-7200 ext. 4430
- Fairleigh Dickinson, COMPASS PROGRAMS (**Bergen**) 201-692-2645 ext. 411
- Fairleigh Dickinson, Florham Campus (**Morris**) 973-443-8095
- College of New Jersey, Career & Community Studies (**Mercer**) 609-771-3342
- Mercer County Community College, DREAM PROGRAM (**Mercer**) 609-570-3422
- Rowan/Gloucester County College-Adult Center for Transition (**Gloucester, Cumberland**) 856-464-5203
- Raritan Valley Community College-The Achievement Center (**Somerset**) 908-526-1200 x8921

# COLLEGE PROGRAMS FOR STUDENTS WITH I/DD (CON'T)



- County College of Morris, Disability Services (**Morris**) 973-328-5000
- Sussex County Community College- LACE (**Sussex**) 973-300-2153
- Kean University, College Steps (**Union**) 1- 888- 732-1022
- Georgian Court University- Transition & Career Services (**Ocean**) 732-987-2659
- Rutgers University, College Support Program (**Middlesex**) 848-445-2000
- Landmark College, College Start Online Program (**Out of NJ**) 802-387-4767
- Landmark College, High School Online Dual Enrollment (**Out of NJ**) 802-387-4767
- Beacon College, Navigator Prep Jr. Online Program (**Out of NJ**) 352-638-9777
- Beacon College, Navigator Online Program (**Out of NJ**) 352-638-9777
- Beacon College, Foundations Program (**Out of NJ**) 352-638-9777
- William Paterson, Transitional Programs (**Passaic**) 973-720-2491

# WEBSITE FOR COLLEGE RESOURCES



- Think College  
Website: <https://thinkcollege.net>
- DO-IT (Disability, Opportunities, Internetworking and Technology)  
Website: <https://www.washington.edu/doit/>
- Beacon College Programs:  
Website: <https://www.beaconcollege.edu/admissions/transition-to-college-programs/>
- Landmark College Programs:  
Website: <https://www.landmark.edu/academics/online-programs>

# CAREER OPPORTUNITIES FOR I/DD



- **Schedule A** is a program for individuals with disabilities to apply for jobs with a number of Federal Agencies without going through the often lengthy traditional hiring process, instead hiring the applicant through a non-competitive hiring process.
- **State Civil Service Jobs-** Some states have specific programs that are similar the Federal Government when it comes to hiring applicants with disabilities to fill current vacancies. For example the **State of New York** implemented a program called the **55-b/c** program which allows veterans and I/DD to apply for Civil Service jobs through a non-competitive hiring process.
- **More state are considering similar programs-** In the State of New Jersey, the state Legislature introduced a bill creating a Task Force to promote the Employment by State Agencies of People with Disabilities and supplementing Title 34 of the Revised Statutes.
- **Job Opportunities:** There are a lot of jobs in State and Federal government that cover a broad range of occupations such as clerk, data entry operator, investigator, auditor, accountant, social service coordinator, etc.



# PROGRAM LINKS

- **Schedule A:**

Website: [https://www.eeoc.gov/eeoc/initiatives/lead/abcs\\_of\\_schedule\\_a.cfm](https://www.eeoc.gov/eeoc/initiatives/lead/abcs_of_schedule_a.cfm)

- **State of New York Department of Civil Service 55b/c Program:**

Website: <https://www.cs.ny.gov/rp55/>

- **State of New Jersey:**

Website: [https://www.njleg.state.nj.us/2018/Bills/A9999/5304\\_I1.HTM](https://www.njleg.state.nj.us/2018/Bills/A9999/5304_I1.HTM)



# ADDITIONAL EMPLOYMENT INFO

- **Job Accommodations Network:**  
Website: <https://askjan.org/>
- **US Dept of Labor, Office of Employment Disability Policy:**  
Website: <https://www.dol.gov/agencies/odep>
- **Partnership on Employment & Accessible Technology (PEAT):**  
Website: <https://www.peatworks.org/>
- **Disability Employment TA Center:**  
Website: <https://aoddisabilityemploymenttacentert.com/>
- **National Technical Assistance Center on Transition:**  
Website: <https://transitionta.org/>
- **What can you do? Campaign for Disability Employment:**  
Website: <https://www.whatcanyoudocampaign.org/>
- **Disability IN:**  
Website: <https://disabilityin.org/>

**State agencies that provide support services to individual with different abilities**

## PERFORM CARE

**Through the New Jersey Children's System of Care (CSOC), Perform Care administers the publicly funded developmental disability service delivery system for children and youth up to age 21. Perform Care is also the single point of access to behavioral health and substance use treatment services for New Jersey youth up to the age of 21.**

**The service system for children with intellectual and/or developmental disabilities is designed to help families meet the needs of children with I/DDs that are not being met through school-related services, medical reimbursable by health insurance or by other existing supports or services. Services through this program are administered based upon level of care and the availability of funds.**



# PERFORM CARE CONTACT INFO

300 Horizon Drive  
Suite 306  
Robbinsville, NJ 08691-1919

Phone: 1-877-652-7624

<https://www.performcarenj.org/index.aspx>

# DIVISION OF VOCATIONAL REHABILITATION



- Helps I/DD prepare for, obtain and maintain competitive employment
- Start here if I/DD need employment services/supports
- Services Include but are not limited to:
  - ✓ Vocational Counseling and Guidance
  - ✓ Supported Employment, Time-Limited Job Coaching
  - ✓ Assistive Technology
  - ✓ Funding for college, post-secondary training, or vocational programs
  - ✓ Tools & equipment needed for a job.
  - ✓ Time limited funding for specific types of therapies
  - ✓ Pre Employment Services for High School Students.



# DVRS Local Offices

- Bridgeton (**Cumberland, Salem**) 856-453-3888
- Camden (**Cherry Hill**) 856-549-0600
- Elizabeth (**Union**) 908-965-3940
- Hackensack (**Bergen**) 201-996-8970
- Jersey City (**Hudson**) 201-217-7180
- Randolph (**Morris**) 862-397-5600 #3
- Neptune (**Monmouth**) 732-775-1799
- Newark (**Essex**) 973-648-3494
- New Brunswick (**Middlesex**) 732-937-6300
- Paterson (**Passaic**) 973-742-9226
- Phillipsburg (**Sussex**) 908-329-9190 #4
- Pleasantville (**Atlantic**) 609-813-3933
- Somerville(**Somerset, Hunterdon**) 908-704-3030
- Thorofare (**Gloucester**) 856-384-3730
- Toms River (**Ocean**) 732-505-2310
- Trenton (**Mercer**) 609-292-2940
- Westampton (**Burlington**) 609-518-3948
- Wildwood (**Cape May**) 609-523-0330

# COMMISSION FOR THE BLIND AND VISUALLY IMPAIRED



- Vocational Rehabilitation Agency for people who are blind or visually Impaired
- Start here if individuals are blind or visually impaired and need employment services/ supports
- Services Include but are not limited to:
  - ✓ Supported Employment
  - ✓ Post-employment services
  - ✓ Assistive Technology
  - ✓ Computer Training
  - ✓ Business Enterprise Programs

<http://www.nj.gov/humanservices/cbvi/services/vocation/index.html>.





# CBVI CONTACT INFO

NJ Commission for the Blind and Visually Impaired  
153 Halsey Street, 6<sup>th</sup> Floor  
P.O. Box 47017  
Newark, NJ 07101-4701  
Phone: 973-648-3333  
General Information Email: [askcbvi@dhs.nj.gov](mailto:askcbvi@dhs.nj.gov)



## **DIVISION OF DEVELOPMENTAL DISABILITIES**

The Division of Developmental Disabilities (DDD) enables adults with intellectual and developmental disabilities (I/DD) to live, work and participate meaningfully in their communities. Through partnerships with individuals, families and service providers, we continually strike a balance between our core goals of ensuring health and safety while supporting and respecting the rights of individuals to make their own choices.



# NJ DDD SERVICES

- Cognitive Rehabilitation (SP only)
- Assistive Technology
- Behavioral Supports
- Career Planning
- Community Based Supports (SP only)
- Community Inclusion Services
- Community Transition Services (CCP only)
- Day Habilitation
- Environmental Modifications
- Goods & Services
- Individual Supports (CCP only)
- Interpreter Services
- Natural Supports Training
- Occupational Therapy
- Personal Emergency Response System (PERS)
- Physical Therapy
- Prevocational Training
- Respite
- Speech, Language, and Hearing Therapy
- Supported Employment
- Supports Brokerage
- Transportation
- Vehicle Modifications

# DDD COMMUNITY SERVICES OFFICES



- Flanders Office  
***Serving: Morris, Sussex, Warren***  
1-B Laurel Drive  
Flanders, NJ 07836  
Phone: 973-927-2600
- Newark Office  
***Serving: Essex***  
153 Halsey Street, 2<sup>nd</sup> Floor  
P.O. Box 47013  
Phone: 973-693-5080
- Freehold Office  
***Serving: Ocean, Monmouth***  
Juniper Plaza, Suite 1-11  
3499 Route 9 North  
Freehold, NJ 07728  
Phone: 732-863-4500
- Mays Landing Office  
***Serving: Atlantic, Cape May Cumberland, Salem***  
5218 Atlantic Avenue, Suite 205  
Mays Landing, NJ 08330  
Phone: 609-476-5000
- Paterson Office  
***Serving: Bergen, Hudson, Passaic***  
100 Hamilton Plaza 7<sup>th</sup> Floor  
Paterson, NJ 07505  
Phone: 973-977-4004
- Plainfield Office  
***Serving: Union, Somerset***  
110 East 5<sup>th</sup> Street  
Plainfield, NJ 07060  
Phone: 908-226-7800
- Trenton Office  
***Serving: Mercer, Hunterdon, Middlesex***  
11a Quakerbridge Plaza  
Mercerville, NJ 08619  
(Mail: PO Box 705, Trenton, NJ 08625)  
Phone: 800-832-9173
- Voorhees  
***Serving: Burlington, Camden, Gloucester***  
2 Echelon Plaza  
221 Laurel Road, Suite 210  
Voorhees, NJ 08043  
Phone: 856-770-5900

## NJ DIVISION OF DISABILITY SERVICES



**The Division of Disability Services (DDS) provides a single point of entry for people seeking disability related information in New Jersey. DDS works to streamline access to services and information that promote and enhance independent living for individuals with all disabilities by facilitating coordination and cooperation among local, county, and state government agencies. DDS promotes maximum independence and the full participation of people with disabilities within all aspects of community life. DDS serves individuals with all disabilities, statewide.**

## NJ DDS Contact Info



NJ Division of Disability Services

11a Quakerbridge Road, Mercerville, NJ 08609

(Mailing: P.O. Box 705, Trenton, NJ 08625)

Phone: 1-888-285-3036

Email address: [www.nj.gov/humanservices/dds/home/index.html](http://www.nj.gov/humanservices/dds/home/index.html)

# ADDITIONAL SUPPORT SERVICES

- Other State agencies may provide services and supports that can assist an individual in employment, community services, and daily living activities
- Rutgers University, Elizabeth Boggs Center on Developmental Disabilities
  - ✓ New Jersey's federally designated University Center for Excellence in Developmental Disabilities Education, Research, and Service.
- Disability Rights NJ- [www.drnj.org](http://www.drnj.org)
  - ✓ Client Assistance Program (CAP) advocates for and protects the rights of I/DD who are seeking or receiving rehabilitation services
  - ✓ Protection and Advocacy for Persons with Dev. Disabilities (PAAD)- protects the legal and civil rights of I/DD

## ADDITIONAL SUPPORT SERVICES (CON'T)



- NJ WINS- [www.njwins.org](http://www.njwins.org)
  - ✓ Assists individuals receiving SSI/SSDI with working and maintaining benefits
- Ticket to Work (SSI)- [www.chooseworktw.net/index.html](http://www.chooseworktw.net/index.html)
  - Connects people ages 18-64 receiving SSI or SSDI with career counseling vocational rehabilitation, job placement and training services.
- NJ Workability- [www.state.nj.us/humanservices/dds/services/workability](http://www.state.nj.us/humanservices/dds/services/workability)
  - ✓ Offers people with disabilities who are working, and whose income would otherwise make them ineligible for Medicaid, the opportunity to receive full Medicaid coverage.
- NJ Statewide Independent Living Council- <https://www.njsilc.org>
  - Maximizes opportunities for I/DD through planning and advocacy
  - Every county in the state is serviced by an Independent Living Center



## **ADDITIONAL SUPPORT SERVICES ( CON'T)**

- NJ ABLE- <http://savewithable.com/nj/home.html>
  - ✓ Individuals who are qualified can save for disability related expenses without losing Social Security or Medicaid benefits
- Special Needs Trust: <http://www.state.nj.us/humanservices/dmahs/clients/snt.html>
  - ✓ Special Needs Trusts are a type of trust that preserves the SNT beneficiary's eligibility for needs based benefits such as Medicaid and Supplemental Security Income.
- Community Health Law Project: [www.chlp.org](http://www.chlp.org)
  - ✓ Provides low cost, fee-for-service legal services to assist individuals with disabilities and their families pursue civil and entitlement issues

# TRANSIT IN NEW JERSEY

## NJ Transit

- Customer Service 1-973-275-5555
- Access Link: 1-973-491-4224
- Reduced Fare Program 1-973-492-7112
- NJ TIPS -1-848-932-4499

## Other Carriers

- Suburban Transit- 1-800-222-0492
- Academy Bus – 1-800-242-1339
- Orange & Newark Independent Bus- 908-372-6134
- Septa- 215-580-7800

## Ride Share Services

- Uber: [www.uber.com](http://www.uber.com)
- Lyft: [www.lyft.com](http://www.lyft.com)
- Ryde 4 Life: <https://ezride.org/transportation/senior-transportation/>

## Community Transit Options

- Taxi
- Shuttles
- Paratransit
- Logistic Care, Mercer County Trade, Morris County Map, Burlink, etc.





# PRESENT LIVE



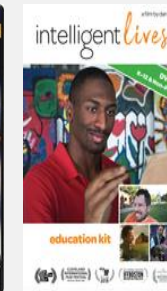
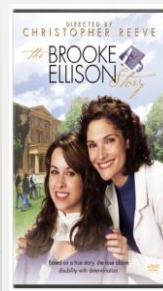
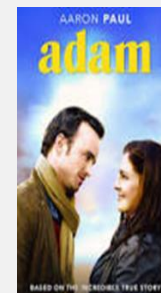
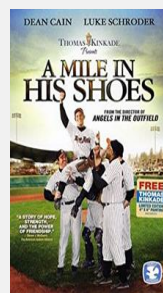
- Able to live independently
- Rent my own apartment
- Aware of strengths and weaknesses
- Employed with State of NJ for over 13 years
- Completed Computer Training, Public Speaking Course
- Wants to give back by helping I/DD live a meaningful life.
- Not dependent on government benefits.
- Career goal is to stay in the Human Services field.
- Enjoying life to the fullest

# YOU GOT WHAT IT TAKES TO SUCCEED



# INSPIRATIONAL MOVIES

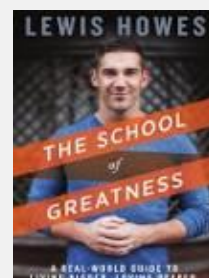
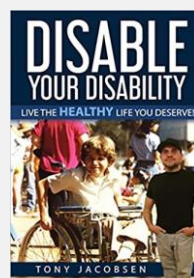
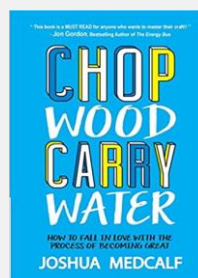
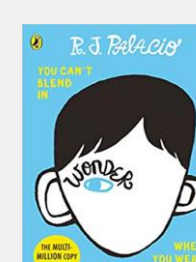
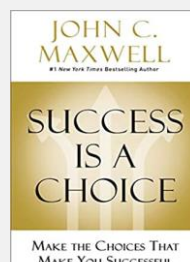
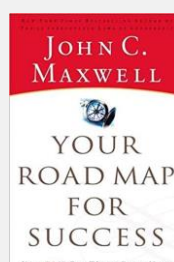
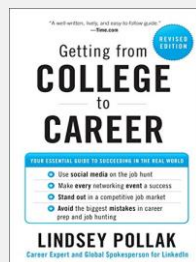
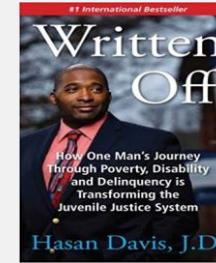
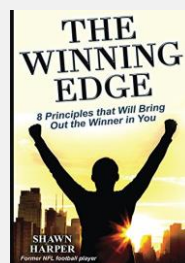
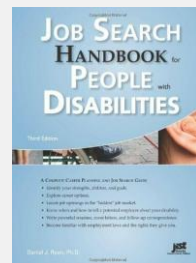
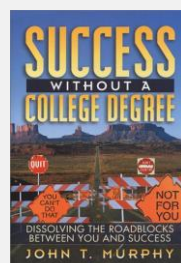
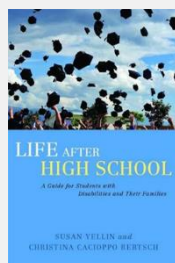
37





# HELPFUL BOOKS FOR JOB SEARCH & INSPIRATION

38



# OPEN DISCUSSION

- Did you learn anything from today's presentation?
- What areas of your child's life can be better supported?
- Can you see your child in his/her dream job?



# CONTACT INFORMATION

- If you have any questions that are related to today's presentation please feel free to contact me at:
- Robert T. Jackson, Assistant Coordinator  
Website: [Robert.Jackson@dhs.nj.gov](mailto:Robert.Jackson@dhs.nj.gov)  
Phone: 609-292-1808 or leave message
- If you would like a presentation on Navigating the DDD service system please reach out to the NJ DDD Transition Helpdesk at [DDD.TransitionHelpdesk@dhs.nj.gov](mailto:DDD.TransitionHelpdesk@dhs.nj.gov)